

Name: _____

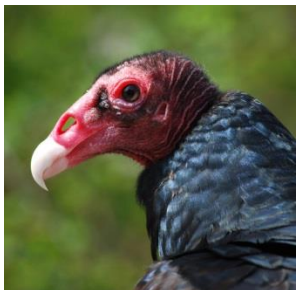
Animal Groups Worksheet

Animal Groups: Mammals Birds Reptiles Amphibians Fish Invertebrates

List which animal groups have the following characteristics:

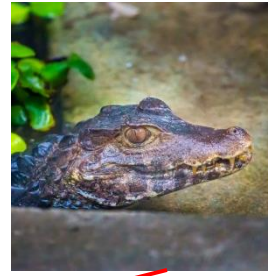
Characteristic	Animal Group(s)
No Backbone	Invertebrates
Cold-blooded	Reptiles, amphibians, fish, invertebrates
Warm-blooded	Mammals, birds
Vertebrates	Mammals, birds, reptiles, amphibians, fish

Circle the invertebrates:



Name: _____

Draw a line to connect the animal to its correct group:



INVERTEBRATE

AMPHIBIAN

REPTILE

BIRD

MAMMAL

Answer true or false for the following questions:

- | | | |
|--|-------------|--------------|
| 1. All mammals give live birth. | True | False |
| 2. Insects have exoskeletons. | True | False |
| 3. Birds and mammals both have four chambered hearts. | True | False |
| 4. Amphibians are warm-blooded. | True | False |
| 5. Reptiles go through metamorphosis. | True | False |
| 6. Newts breathe through their moist, semi-permeable skin. | True | False |
| 7. Bats have wings so they are a type of bird. | True | False |

Name your favorite animal, list its animal group, and write what characteristics makes it part of that group.

Favorite animal: _____; Animal group: _____

Characteristics: _____
